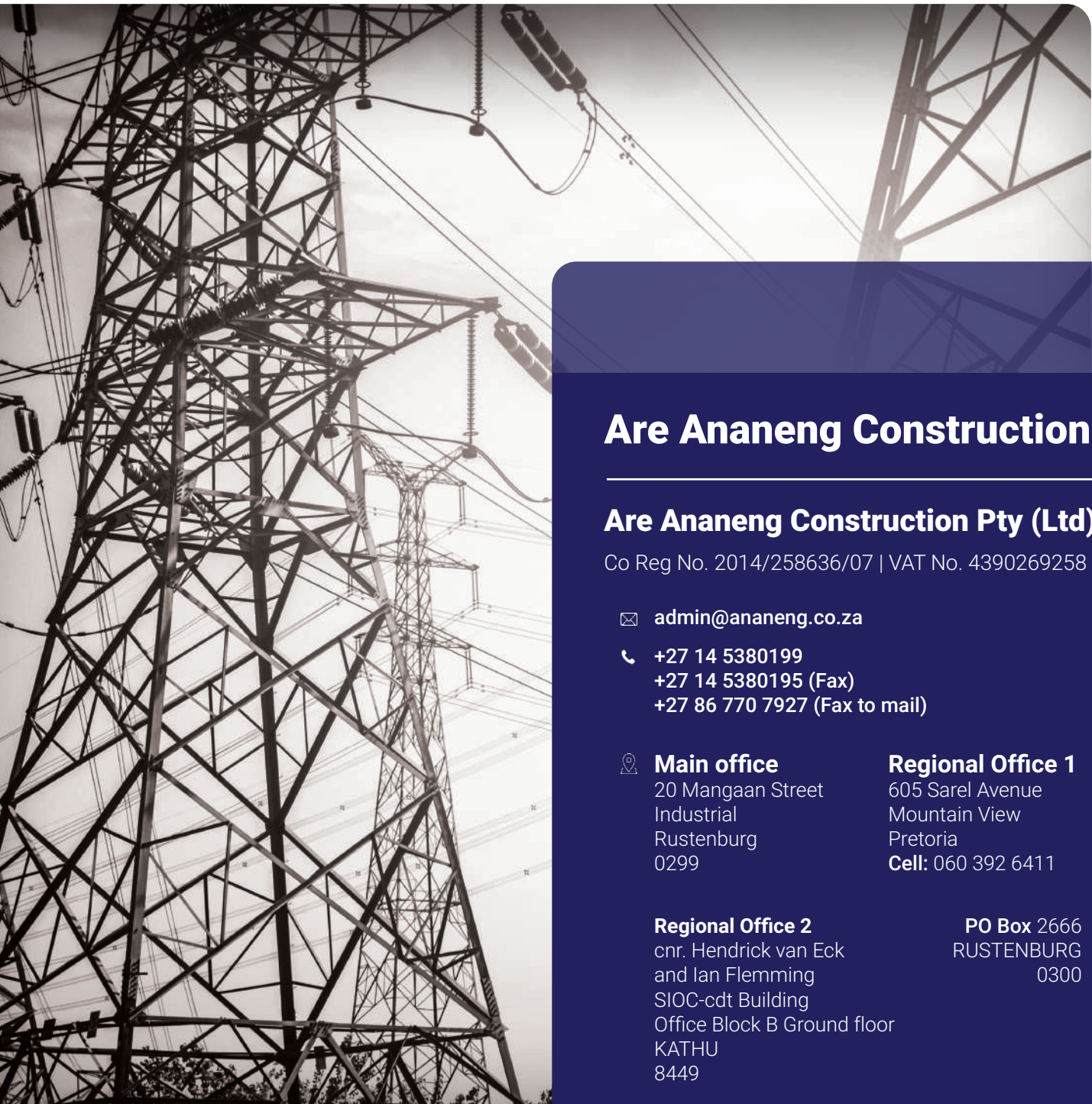




COMPANY PROFILE



Are Ananeng Construction

Are Ananeng Construction Pty (Ltd)

Co Reg No. 2014/258636/07 | VAT No. 4390269258

✉ admin@ananeng.co.za

☎ +27 14 5380199
+27 14 5380195 (Fax)
+27 86 770 7927 (Fax to mail)

📍 **Main office**
20 Mangaan Street
Industrial
Rustenburg
0299

Regional Office 1
605 Sarel Avenue
Mountain View
Pretoria
Cell: 060 392 6411

Regional Office 2
cnr. Hendrick van Eck
and Ian Flemming
SIOC-cdt Building
Office Block B Ground floor
KATHU
8449

PO Box 2666
RUSTENBURG
0300

Level BBEEE1



“

To grow into a reputable, sustainable and profitable company. Expand our services across various industries and provide our clients with high quality services while playing a meaningful role in renewable energy

-Our vision

A large, white, stylized quotation mark icon consisting of two curved shapes facing each other, positioned at the top left of the text area.

Be competitive on cost of providing services by maintaining a flat but effective human resource structure, using quality products and timeous delivery of the projects. To be the best electrical and automation engineering contractor in Africa within industries and renewable energy.

-Our strategy

CONTENT

About us	5
Empowerment status	5
Values	6
Client range	6
Services	7
Company site organogram	8
SHEQ	10
Training and development	10
Gallery	11

ABOUT US



Are Ananeng Construction was established in 2015 and has established itself as one of the best in South Africa as an electrical and instrumentation turnkey, installation and commissioning, contractor. Specialist mainly in Mining sector, Government and Renewable Energy.

It also operates as transformer, mini-sub and switchgear suppliers. It is one of the only companies which manufacturers cable racks. It is also one of the few established electrical contracting entity that is Black Women Owned and managed by qualified Electricians, Technicians and Engineers.

Since its inception, more than 2 years ago, Are Ananeng Construction has successfully completed various projects involving engineering designs, installation, testing and commissioning of Electrical and Automation System for both private and public sector clients.

EMPOWERMENT STATUS

We are fully compliant with BBEEE code of practice. Are Ananeng Construction is Black Women Owned (BWO) and our current BBEEE status is Level One

OUR VALUES

- Professionalism
- Accountability
- Commitment
- Safety
- Caring
- Respect

CLIENT RANGE

The construction industry has been growing at a quick pace for several decades now. Are Ananeng Construction programs to rapidly develop promotional alliances with industry management and engaging in new revenue of its solutions, to personal and professional contractors.

The technique will focus on obtaining Municipalities, Mines and Government agreements.

OUR SERVICES

- **MV System**

Transformers, Cables, Racking, Switchgear, Motor, VSD's

- **LV System**

Transformers, Cables, Racking, Switchgear, Motor, VSD's

- **HV Substation up to 132kv**

Foundations, Structural steel, Equipment and stringing

- **LV and MV OHL Installation**

Up to 88kv

- **Stand by Power**

Generators

- **Instruments Panels**

- **PLC Panel**

- **Instruments**

Flow level, Temperature, Pressure, etc

- **Earth and Lighting Protection**

- **Pump Repairs**

- **Scaffolding**

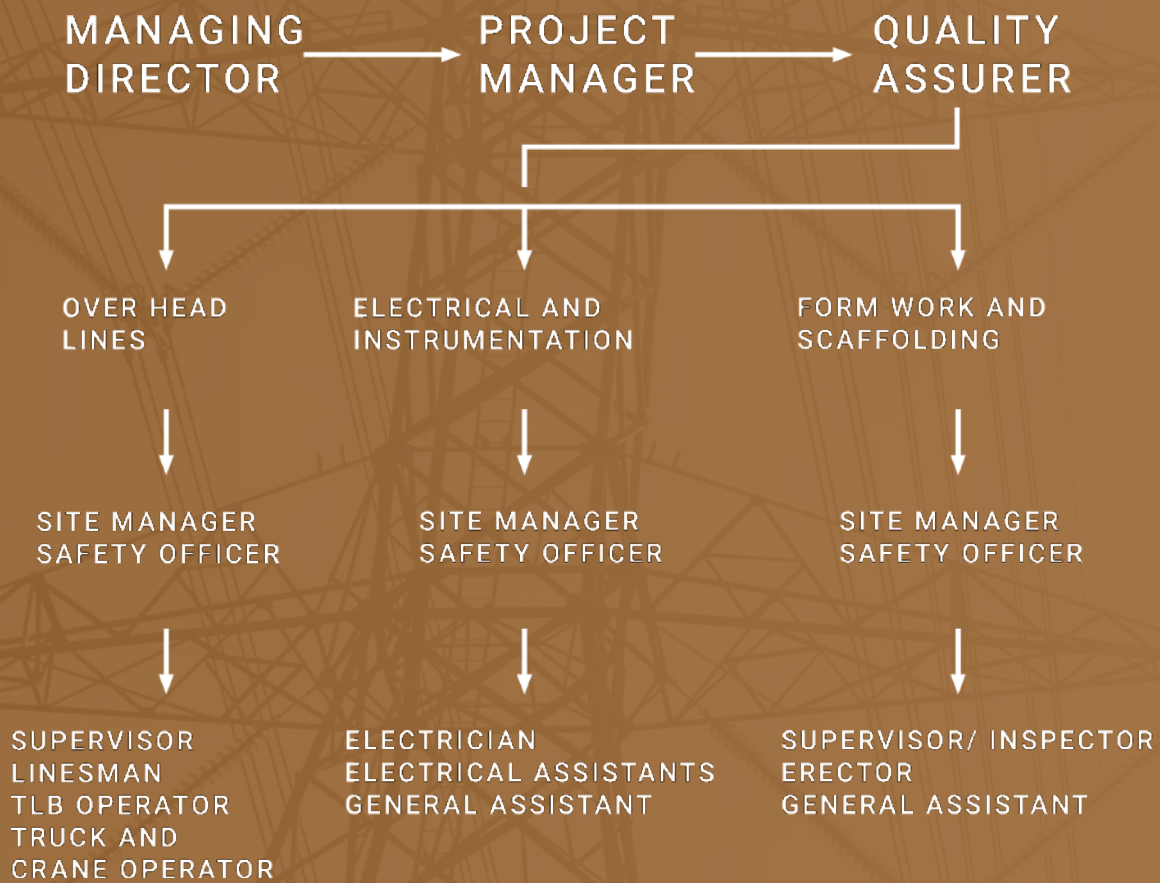
- **Fibre optic Installation**

- **Cable fault location**

- **VLF Tests**

- **Electrical C.O.C's**

COMPANY SITE ORGANOGRAM



PHYSICAL GROWTH

09/03/2015



4 years later



SHEQ

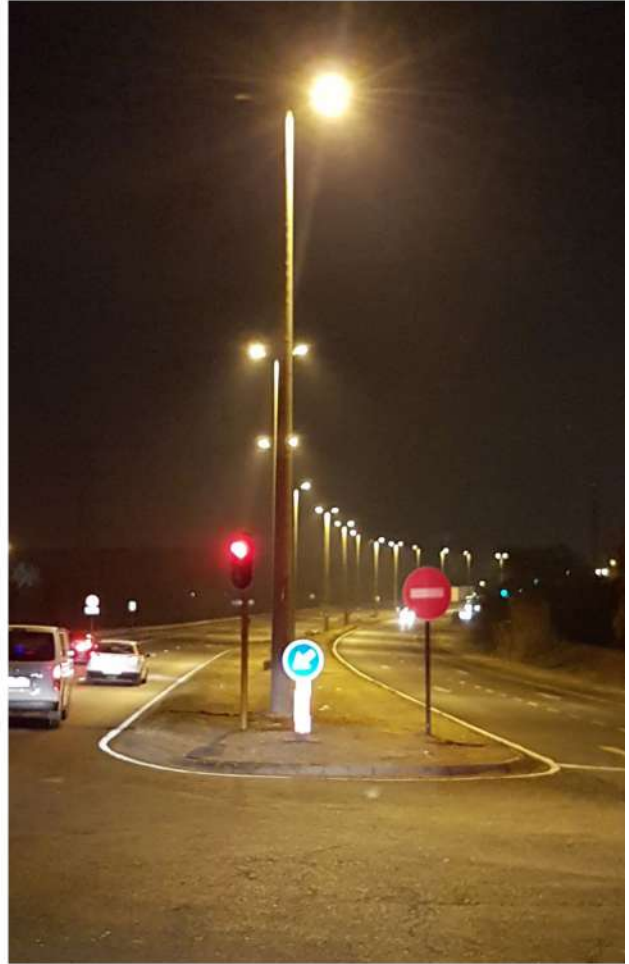
Our installation and manufacturing process follows a comprehensive quality management system as per ISO 9001:2015. We are also in process of obtaining accreditation for ISO14001/ OHSAS18001, ISO9001.

TRAINING AND DEVELOPMENT

Are Ananeng Construction focuses on employment of local labour.

Implementing skills development to uplift and give back to the local community. All employees are trained as per their job descriptions in accordance to MHSA or OHSAS

GALLERY







PROJECT NAME	CLIENT	LOCATION	CONTRACT START DATE (Month and Year)	CONTRACT END DATE (Month and Year)	CONTRACT DURATION (Months)
Dishaba Shaft Underground 19 Level- Upgrade of old existing Switchgear to New ABB Safe plus Switchgear and MV&LV Cables - PO 700002494	Anglo Platinum Amandelbult	Dishaba #	Jan-16	Jul-16	7 months
Tumela Shaft - Refurbishment of the Loading Belt and Boxes Underground - PO 700004126	Anglo Platinum Amandelbult	Tumela #	Aug-16	Dec-16	3 months
Bathopele Shaft - Installation of New OHL and Upgrade of MV Main Consumer Substation Cable - PO 700001779	Anglo Platinum - Rustenburg Section	Bathopele #	Sep-15	Mar-16	5 months
Waterval Smelters - ACP - DML Pilot Plant - Refurbishment of Electrical and Instrumentation of the Plant - PO 700004875	Anglo Platinum - Waterval Smelters	Waterval Smelters	Nov-16	Jul-17	6 Months
Siphumelele - Refurbishment of Electrical & Instrumentation on the Surface Conveyor Belts - PO 700003595	Anglo Platinum - Rustenburg Section	Siphumelele	Jun-16	Dec-16	5 months
RBMR - Installation & Commissioning of Emergency Generator/MCC - PO 700004713	Anglo Platinum - Rustenburg Section	RBMR	Dec-16	Jun-17	6 Months
Separation of Electrical & Instrumentation between Sibanye Platinum and Anglo Platinum - PO 700004586	Anglo Platinum - PMR	PMR West 10	Feb-17	Oct-17	8 months
Completion of the RE- Route of Anglo Platinum 11kV OHL at Bridge 8&9	Umso Construction	Rustenburg	May-15	Jul-15	2 months
Construction and Supply of New 22kV Wooden PowerLine	Matutu Absorbents	Makweleng	Jun-16	Aug-16	3 months
7 Point Substation - New OHL - PO 4900180487/4500874129	Sibanye Stillwater	7 Point Substation - K6 Mine	Mar-18	Jul-18	4 months
Eskia Mphahlele Road - Ward 1 & 54 - Installation of new Street lights	City of Tshwane	Eskia Mphahlele Road	Sep-17	Dec-17	3 months
Eskia Mphahlele Road Phase 1 Construction of Streetlights 14.4m Concrete Poles	City of Tshwane	Eskia Mphahlele Road	Sep-17	Dec-17	3 months
Income Cable Installation - Transformer 7 & 8 - Mortimer Substaion - PO 7000006284	Anglo Platinum Mine - Mortimor	Mortimer Substation	May-18	Apr-19	10 months

33kV OHL Installation - Vent Fan E&I Underground Belt Extention - PO 5502875179	Royal Bafokeng Platinum Mine	Styldrift	Nov-17	Mar-18	4 months
RRT - Electrical Reticulation and Street lights Installation - Order #24600	Umso Construction	Rustenburg CBD	May-18	Nov-18	6 months
Installation and Terminations of Cables - PO 5504988356	Royal Bafokeng Platinum Mine	Styldrift	Oct-18	Oct-18	1 month
Styldrift - DE16010 - ORE-RES-DEV Belt Extention - PO 5800019843	Royal Bafokeng Platinum Mine	Styldrift	Sep-18	Nov-18	2 months
Marikana Midspan - Replace of Stolen OHL - PO 4900208356	Sibanye Stillwater - Kroondal Operations	Marikana	Sep-18	Sep-18	1 month
Maseve - Lighting and Small Power - PO 5800020189	Royal Bafokeng Mine - Maseve Platinum	Maseve	Feb-18	Feb-18	1 month
Dishaba # - Supply and Installation of Electrical Reticulation for Surface Fan's - PO 7000006719	Anglo Platinum Mine - Amandelbult	Dishaba #	Sep-18	Nov-19	13 months
Siphumelele No. 1 # - Damaged OHL to be repaired - PO 4900222505	Sibanye Stillwater - Kroondal Operations	Siphumelele	Jan-19	Feb-19	2 months
Construction of Street lights at Eskia Mphalele Road - PO 450110507	City of Tshwane	Eskia Mphalele Road Tshwane	Jan-19	Apr-19	3 months
6 Point Substation - Extention of Cables	Sibanye Stillwater - Platinum Miles Resources	Platinum Miles	Feb-19	Feb-19	1 month
6 Point Substation - Term/Joints Cables	Sibanye Stillwater - Platinum Miles Resources	Platinum Miles	Feb-19	Feb-19	1 month
All Electrical work on Lady's Chancehouse - PO 7000005470	Anglo Platinum - PMR Ladies Chancehouse	PMR	Nov-17	Dec-18	13 months
Siphumelele No. 1 # Replace Stolen OHL - PO 4900239746	Sibanye Stillwater - Rustenburg	Siphumelele	Jul-19	Jul-19	1 month
Repair existing Lights & Stop Start Station - E Feed Pump Station - PO 014237	Sibanye Stillwater - Platinum Miles Resources	Platinum Miles	Jan-20	Jan-20	1 month
Electrical & Instrumentation Installation - Ball Mill MCC Breakdown - PO 014631	Sibanye Stillwater - Platinum Miles Resources	Platinum Miles	Jan-20	Jan-20	1 month

Supply & Installation of E&I Work - PO 61690	IRITRON	PMR - Thermal	Jul-19	Aug-19	2 months
Electrical & Instrumentation Installation - Venthole 2 PO 5800020214	Royal Bafokeng Platinum Mine	Styldrift	Jul-19	Sep-19	2 months
Kwe- Street Lights Maintenance Kwezi PO 4900260869	Sibanye Stillwater - Kroondal Operations	Kwezi	Oct-19	Oct-19	1 month
Public Lighting Infrastructure Maintenance & Construction SID EE 37 - 2015/2016	City Of Tshwane	Tshwane	2016	2018	Maintenance contract 3 years
Low Voltage and Medium Network Maintenance & Consumer Connections SID EE 38 - 2015/2016	City OF Tshwane	Tshwane	2016	2018	Maintenance contract 3 years
E-Feed Conveyor Belt Electrical and Instrumentation Installation - PO 014210	Sibanye Stillwater - Platinum Miles Resources	Platinum Miles	Jan-20	Feb-20	2 months
Installation of Cable - PO 014917	Sibanye Stillwater - Platinum Miles Resources	Platinum Miles	Oct-20	Oct-20	1 month
642L North Merensky Decline S3 Electrical & Installation - PO 5800020726	Royal Bafokeng Platinum Mine	Styldrift	Dec-19	Feb-20	2 months
Merensky Phase 1 EC&I Installation for Phase 2B Strike Conveyors 600LV - PO 5800020390	Royal Bafokeng Platinum Mine	Styldrift	Jul-19	Aug-19	1 month
Merensky Phase 1 EC&I Installation for Norht Merensky Belt Extension and Bulkhead 4 - PO 5800020878	Royal Bafokeng Platinum Mine	Styldrift	Mar-20	Feb-21	
K6 Supply from 7 Point Substation to K6 OHL & Re-Routing of Fibre Optic - PO 4900254905	Sibanye Stillwater - Kroondal Operations	K6 to K7	Oct-19	Aug-20	10 months
EC&I Installation for 600 & 642 Level Workshop South Decline conveyor Belt, Phase 2, 3 Belt extension of the Top and Bottom of Silo Conveyors on 642 and 708 Level Respectively	Royal Bafokeng Platinum Mine	Styldrift	Mar-19	Mar-21	10 months
Norht Shaft Belt Extension - PO 5800020546	Royal Bafokeng Platinum Mine	North Shaft	Dec-19	Sep-20	7 months

EC&I North and South Dip Conveyor - PO 5800020973	Royal Bafokeng Platinum Mine	Styldrift	May-20	Mar-21	9 months
Switchgear Upgrade Level 14 to 18 - PO 7000008397	Anglo American - Amandelbult	Dishaba Mine	Oct-19	Jan-20	3 months
642L North Dip Conveyor Belt Extension 4 & Bulkhead 4 - PO 5800020878	Royal Bafokeng Platinum Mine	Styldrift	Mar-20	Nov-20	7 months
642L South Dip Conveyor Belt - PO 5800021058	Royal Bafokeng Platinum Mine	Styldrift	Jul-20	Feb-21	6 months
Electrical Work Done 600L Material Bay 1 & 1B - PO 5800021005	Royal Bafokeng Platinum Mine	Styldrift	Jun-20	Jun-20	1 month
Repair Married Quarters OHL - PO 4900295614	Sibanye Stillwater Rustenburg	Married Quarters	Oct-20	Nov-20	1 month
Electrical, Control and Instrumentation Installation 642L Top Silo Conveyor Belt - PO 5800020957	Royal Bafokeng Platinum Mine	Styldrift	May-20	Sep-21	13 months
All Electrical Work on New Ladies Chancehouse - PO 700005470	Anglo Platinum Mine - PMR	PMR Level 2	Jul-17	Sep-20	36 months
EC& I Installation of Lighting and Small Power For High Bay 2 - PO 5800020247	Royal Bafokeng Platinum Mine	Styldrift	Feb-19	Nov-20	16 months
Installation of a 150mm Electrical Cable at North Shaft from Surface to Level 10 Substation - PO 5800020959	Royal Bafokeng Platinum mine - Norht Shaft	North Shaft	May-20	Sep-20	4 months
Low Voltage and Medium Network Maintenance and Consumer Connections - USD EE 07 2019/20	City of Tshwane	Tshwane	Dec-19	Current	current
Electrical & Instrumentation Strike Conveyor Belt - PO 5800021114	Royal Bafokeng Platinum Mine	Styldrift	Sep-20	Aug-23	current
Street Light Maintenance Project - RBA/PROJELEC-STREETLIGHT/2019/TC13	Royal Bafokeng Administration	Phokeng	Nov-19	Current	current
E&I Installation Level 15 - PO 5800020990	Royal Bafokeng Platinum Mine	Styldrift	Jul-20	Feb-21	6 months
E&I Installation 642L South Merensky Belt Extension & Equipment of Bulkhead S5 - PO 5800021372	Royal Bafokeng Platinum Mine	Styldrift	Nov-20	May-21	5 months

EC&I 600L South & West Strike Conveyor - PO 5800021397	Royal Bafokeng Platinum Mine	Styldrift	Dec-20	Current	current
Installation of PDS Control System - PO 700010044	Anglo Platinum Mine - PMR	PMR	Dec-20	Mar-21	3 months
Re- Routing of Cables for automating 3kW sump Pump Level 2 - PO 5505781516	Anglo Platinum Mine - PMR	PMR	Mar-21	Jul-21	4 months
Electrical Work & Scaffolding - PO 7000001031	Anglo Platinum Mine - Mortimer Smelters	Mortimer Smelters		current	current
Simonye Line 1 Repair OHL - 550140001	Sibanye Stillwater Rustenburg - Kroondal Operations	Simonye	May-21	May-21	1 month
Supply of Labour - Anglo Waterval Smelters Site of MV Installation - PO 211062	EATON ELECTRIC	Waterval Smelters	Aug-21	Aug-21	3 weeks
Supply Material - Instrumentation - Waterval Smelters - PO 7000010673	Anglo Platinum Mine - Waterval Smelters	Waterval Smelters	May-21	Aug-21	3 months
EC&I Installation on Conveyors North 6 East Transfer and North 4 East Leg 2 on 600L - PO 5800021556	Royal Bafokeng Platinum Mine	Styldrift	Apr-21	Current	current
400m Strike Belt Extension - PO 5800021725	Royal Bafokeng Platinum mine - North Shaft	North Shaft	May-21	current	current
New Fire Training Centre Electrical Installation - PO 5505949221	Anglo Platinum Mine - PMR	PMR	Aug-21	current	current
Overhead Line for Ventilation Shaft 4 - PO 5800021875	Royal Bafokeng Platinum Mine	Styldrift	Aug-21	current	current
E&I Installation for Eng Offices & MUD Pump Station on 708 Level - PO 5800022097	Royal Bafokeng Platinum Mine	Styldrift	Sep-21	current	current
Supply & RE-Installation of Cable Racks and Strapping of Cable - PO 017766	Sibanye Stillwater - Platinum Miles Resources	Platinum Miles	Sep-21	current	current
Upgrade of Existing MV Switchgear & Cables at SLAG Cleaning Furnace 2 -610-SGM02 PO 3527021329/3527021569/3527021703	ABB	Waterval Smelters	Sep-22	Dec-22	complete

Upgrade of Existing MV Switchgear at SLAG Cleaning Furnace 1	ABB	Waterval Smelters	Mar-22	Aug-22	complete
Upgrade of Existing MV Switchgear at Flash Dryer Substation PO 3527021682	ABB	Polokwane	Current	current	current
Upgrade of Existing Switchgear at Main Consumer Sub at Substation 450 PO 3527022256	ABB	Polokwane	Current	current	current
New Electrical Installation for 330m Conveyor Belt at 15 Level 5800023362	Royal Bafokeng Platinum Mine	North Shaft	Apr-22	current	current
New Electrical Installation for 100m Conveyor Belt at 15 Level 5800023363	Royal Bafokeng Platinum Mine	North Shaft	Apr-22	current	current
77Small Power Upgrade - Installation of Condition Monitoring System DB's & Associated cables PO 7000012064	Anglo Platinum Mine - Amandelbult	Dishaba & Tumela Shaft	Mar-22	Jun-22	complete

“AN OPTIMIST SEES OPPORTUNITY IN EVERY DIFFICULTY, A PESSIMIST SEES DIFFICULTY IN EVERY OPPORTUNITY”

